

## F. Short Answer Type-II Questions.

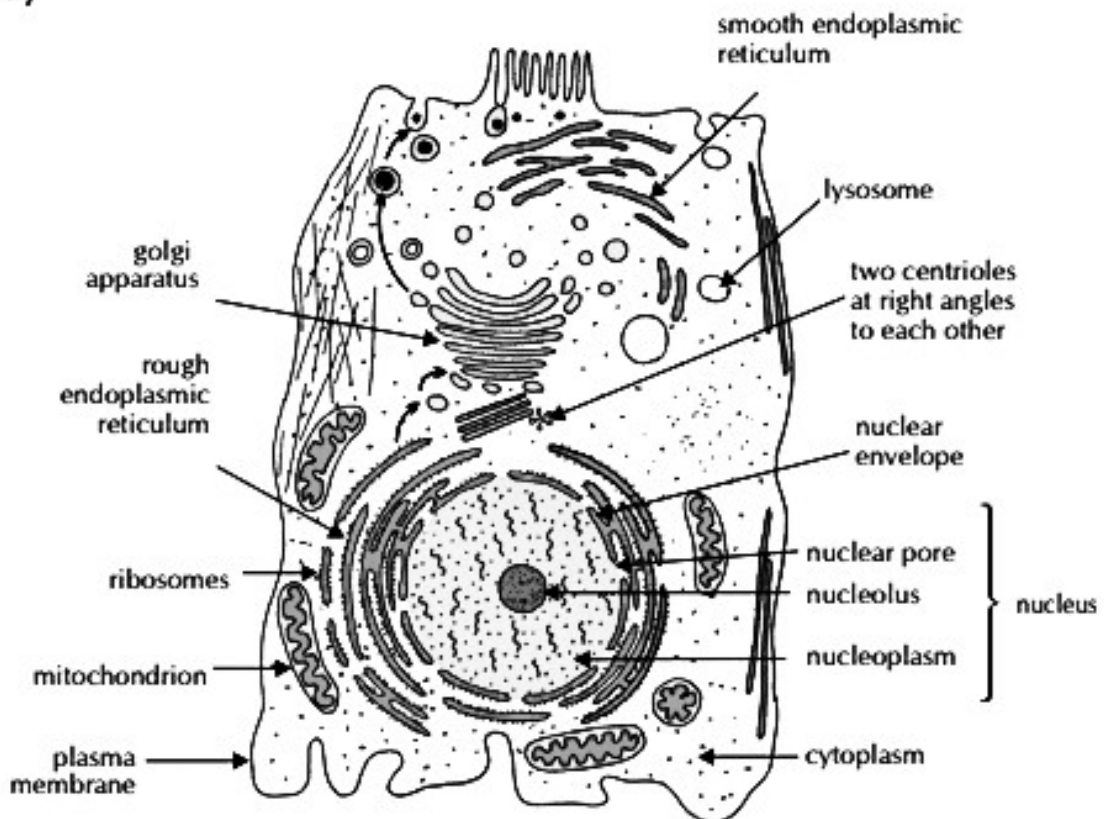
- Organisms which are made up of only one cell are called unicellular organisms. Organisms which are made up of many cells are called multicellular organisms.

Examples of unicellular organisms are *Amoeba* and *Paramecium* and of multicellular organisms are insects and trees.

- The cells which have a well-organised nucleus with nuclear membrane are called eukaryotic cells. Examples are *Hydra* and insects.
- Plasma membrane is called selectively permeable because it allows only selected substances to pass in or out of a cell.
- (a) Organ system (b) Teamwork

## G. Long Answer Questions.

- (a)



Ultrastructure of generalised animal cell (as seen under electron microscope)

### (b) Differences between plant and animal cells

S.No.	Parameters	Plant cell	Animal Cell
1.	Size	Plant cells are larger in size with distinct outlines.	Animal cells are smaller than plant cells.
2.	Cell wall	Cell wall is present.	Cell wall is absent.
3.	Plastids	Plastids are present.	Plastids are absent.
4.	Vacuoles	A large vacuole is present. It fills most of the space of cell.	Vacuoles are absent, if present are small.